

# LEXINGTON I OF SHERBROOKE

P.U.D.

IN PART OF TRACT 42, TWP. 44 1/2 S., RGE. 42 E. & SEC.'S 5 & 6, TWP. 45 S., RGE. 42 E.

PALM BEACH COUNTY, FLORIDA

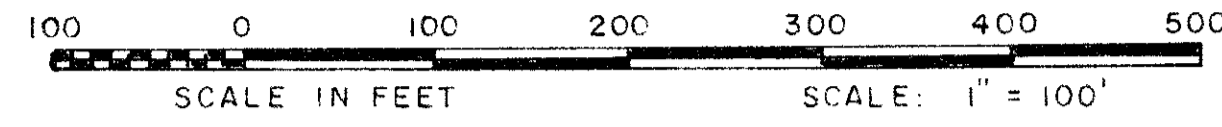
IN 4 SHEETS SHEET NO. 3

GEE & JENSON

ENGINEERS-ARCHITECTS-PLANNERS, INC.

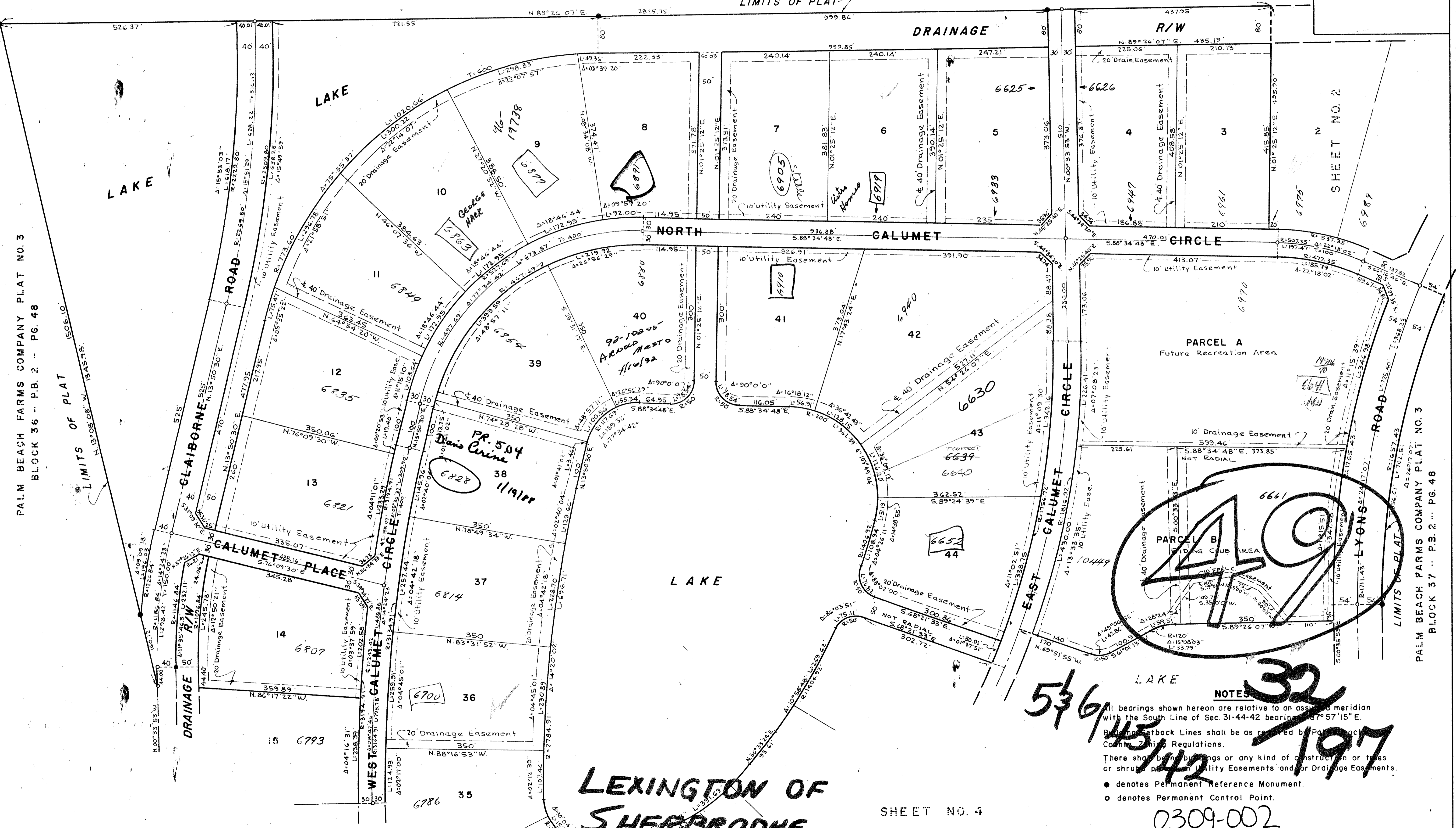
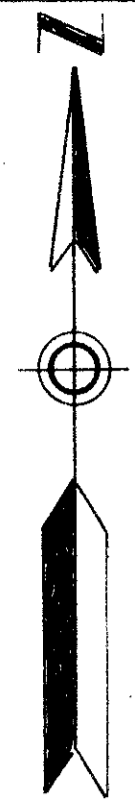
WEST PALM BEACH, FLORIDA

JANUARY 1977



PALM BEACH FARMS COMPANY PLAT NO. 3  
BLOCK 36 - P.B. 2 - PG. 48

197



PALM BEACH FARMS COMPANY PLAT NO. 3  
BLOCK 36 - P.B. 2 - PG. 48

SHEET NO. 4

SHEET NO. 4

## LEXINGTON OF SHERBROOKE

536/45/42/197

NOTES

All bearings shown hereon are relative to an assumed meridian with the South Line of Sec. 31-44-42 bearing S 87° 57' 15" E.

Backsight Lines shall be as required by Palm Beach County Zoning Regulations.

There shall be no buildings or any kind of construction or trees or shrubs placed on Utility Easements and/or Drainage Easements.

- denotes Permanent Reference Monument.
- denotes Permanent Control Point.

0309-002

PALM BEACH FARMS COMPANY PLAT NO. 3  
BLOCK 37 - P.B. 2 - PG. 48